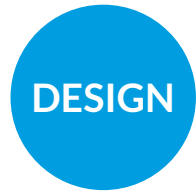


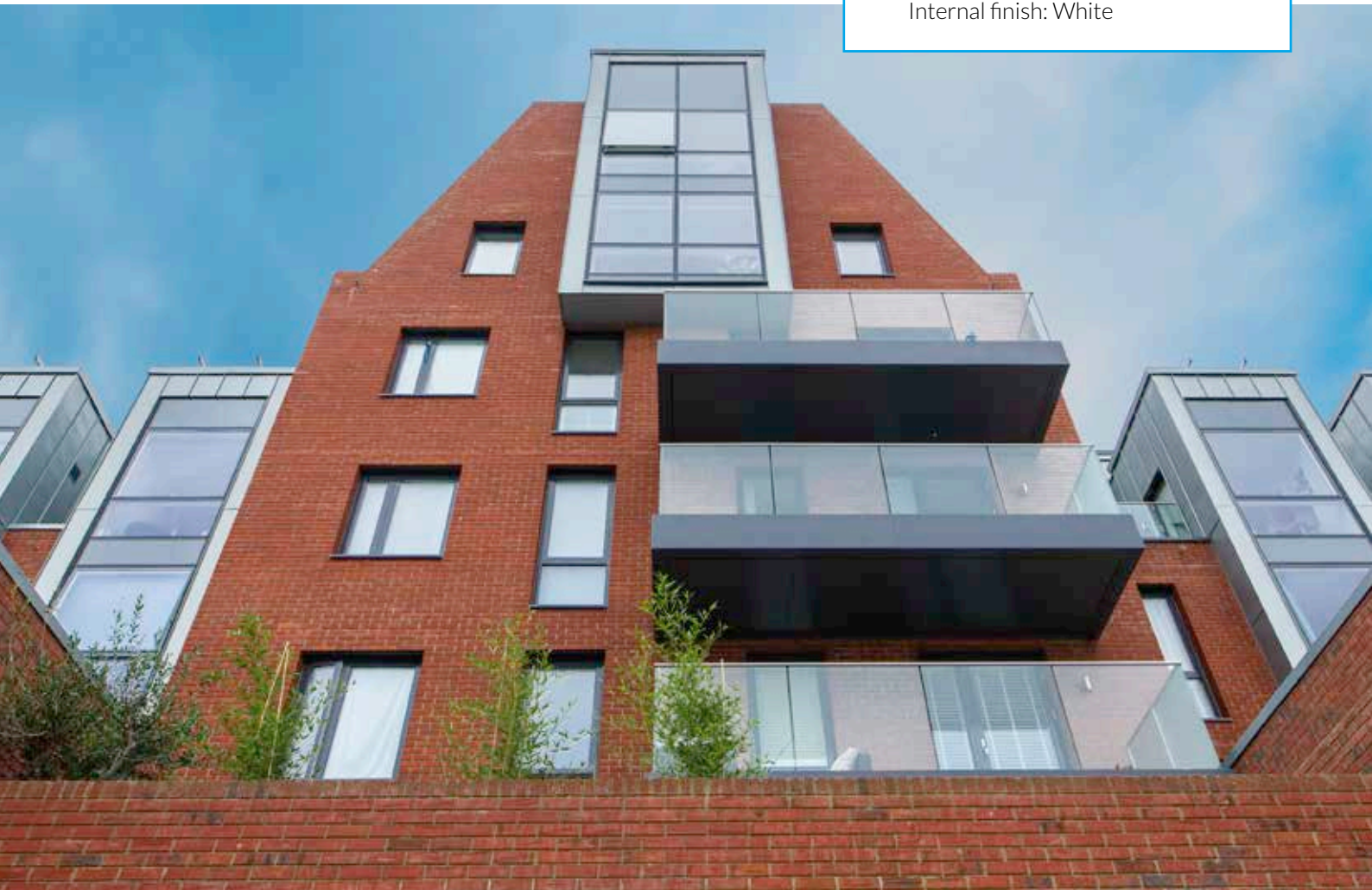
STREATHAM HILL LONDON SQUARE



PROJECT: Streatham Hill
SECTOR: Residential
BUILT: 2016-2018
DEVELOPER: London Square
ARCHITECT: CJCT
PROJECT VALUE: £920,000

SPECIFIED FOR:

- Development of high specification luxury apartments
- 3,350m² of windows and doors across 254 apartments
- Triple-glazed Design Series
- TSG180 top hung fully reversible, SSG90 open out casement and FDG/FDGD terrace/balcony doors
- Acoustic attenuation to 46 dB(Rw) to reduce traffic noise pollution
- External finish: RAL 7012 (grey)
Internal finish: White



STREATHAM HILL LONDON SQUARE



The Westcoast Windows Design series has been developed with contemporary architecture in mind, with a deeper glass unit to create a minimal step between outer glass and frame for maximum light, a flush finish and elegant lines.

The Design series contemporary composite windows and doors are available in a wide range of fixed windows, open out windows, open out doors and sliding doors and offer a U-value of 1.0 W/m²k for opening and 0.9 W/m²k for fixed windows. Take a look at the full range: www.westcoastwindows.com/windows-doors/design/

USEFUL LINKS...

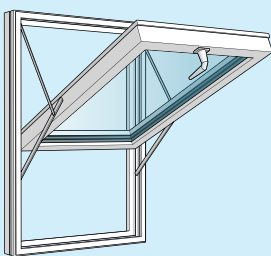
To view this project case study on our website:
[STREATHAM HILL LONDON SQUARE CASE STUDY](#)

View our Quality Assurance certification:
[QUALITY & ASSURANCE](#)

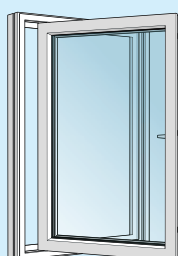
Product datasheets and drawings available to download:
[DOWNLOADS PAGE](#)

To discuss your commercial project with our highly skilled team who offer a ONE STOP SHOP solution from planning through to delivery and installation contact:
info@westcoastwindows.com or call 01359 241944

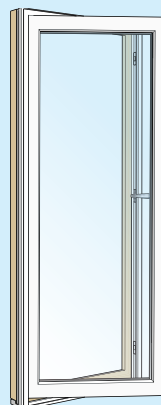
WESTCOAST WINDOWS PRODUCTS USED IN THIS PROJECT:



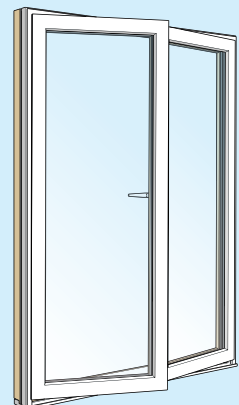
TSG 180
Fully Reversible
180° Opening



SSG 90
Side Swing Projecting
90° Opening



FDG
Open Out Balcony/
Terrace Door



FDGD
Open Out Balcony/
Terrace Door