

CASE STUDY: SNOW HILL WHARF



WESTCOAST SWEDISH COMPOSITE WINDOWS FOR AN EXCLUSIVE COLLECTION OF AWARD-WINNING STYLISH APARTMENTS AT SNOW HILL WHARF, BIRMINGHAM

PROJECT SPECIFICATION:

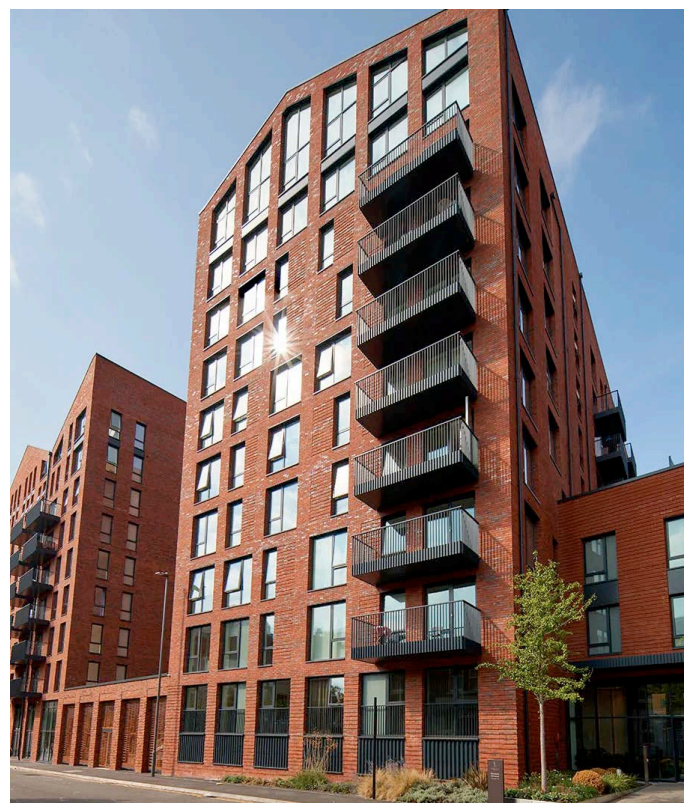
NAME: Snow Hill Wharf

SECTOR: Residential

CLIENT: St Joseph (Berkeley Group)

SPECIFIED FOR:

- 6,500m² triple-glazed windows and doors
- 430 apartments
- External finish: RAL 7016 anthracite grey
- Internal finish: White
- Products specified:
 - TSG180 Top Hung Reversible Window
 - FDG Single Terrace/Patio Door (Open Out)
 - FKD Fixed Light
 - SHID Single Terrace/Patio Door (Open In)



CASE STUDY: SNOW HILL WHARF



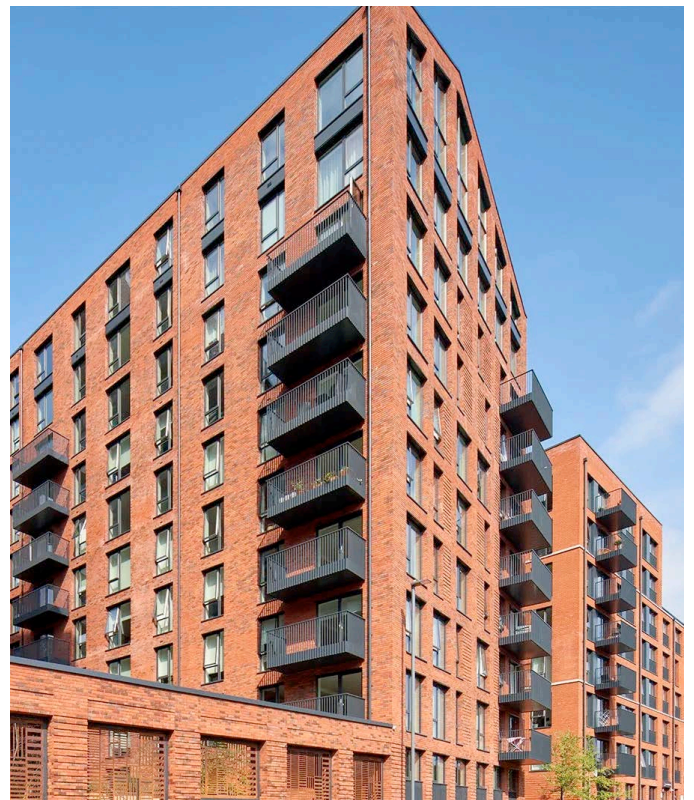
WESTCOAST SUPPLIED IN EXCESS OF 6,500M² SWEDISH HIGH PERFORMANCE COMPOSITE WINDOWS AND DOORS, ACROSS 62 FLOORS OF THE DEVELOPMENT

On a quiet stretch of the canal enjoying a prime location in Birmingham, Snow Hill Wharf is an exclusive development of luxury one, two and three bedroom apartments created by St Joseph, part of the Berkeley Group.

With every home at Snow Hill Wharf built to the Berkeley Group's exacting standards, the apartments are modern, spacious and impeccably finished, boasting an array of sleek finishes and thoughtful layouts.

The development was undertaken by St Joseph, part of the Berkeley Group, and encompasses five buildings of one, two and three-bedroomed apartments with interiors influenced by contemporary aesthetics to create bright, airy rooms and clean lines.

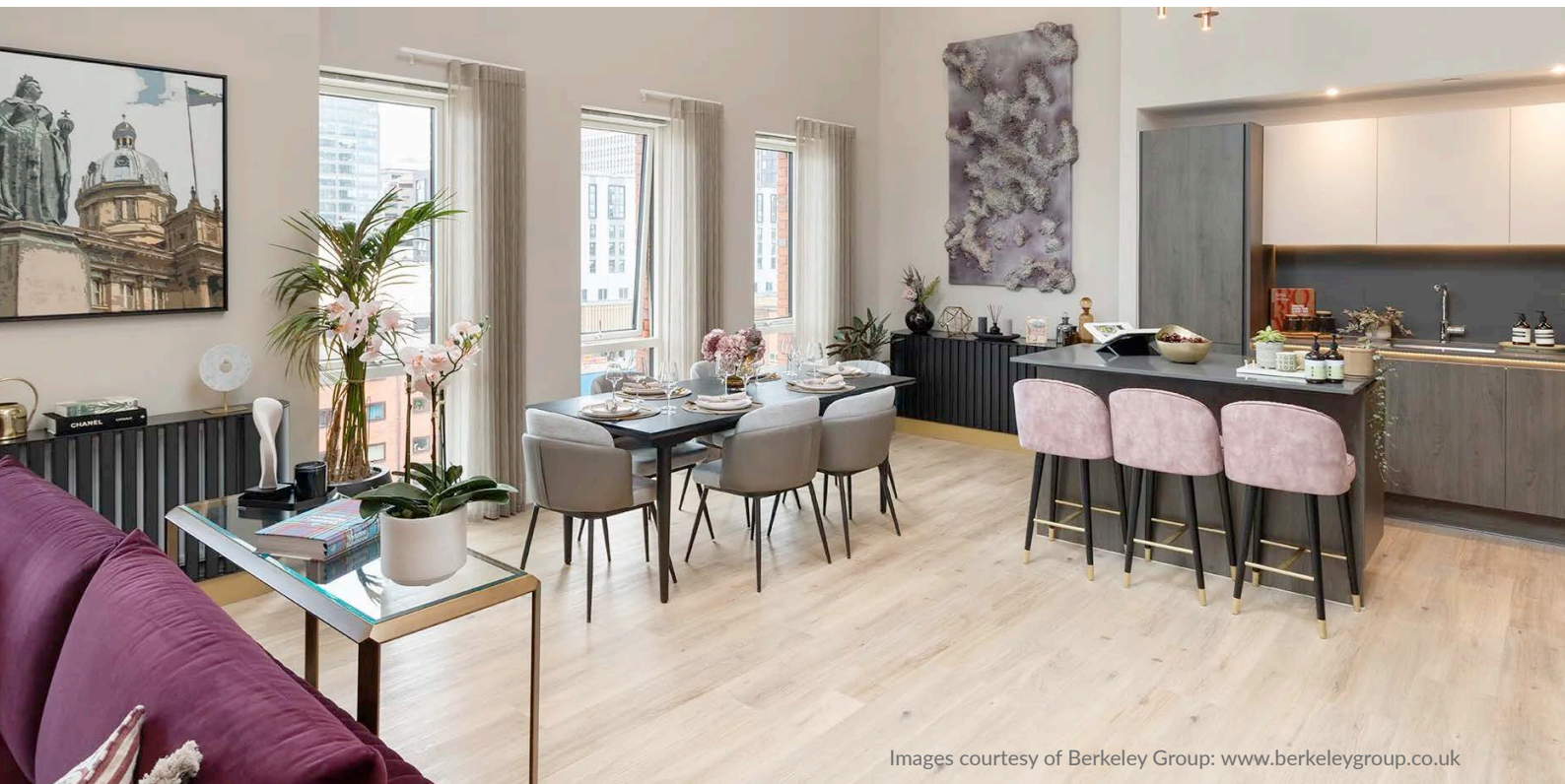
The apartments boast magnificent triple-glazed composite windows supplied by Westcoast which allow an abundance of natural light into the homes, adding to it an architectural interest and character while maintaining exceptional energy efficiency. The floor to ceiling windows maximise light into the homes and provide access to the outside terrace or balcony, offering canal-side, garden or city views.



CASE STUDY: SNOW HILL WHARF

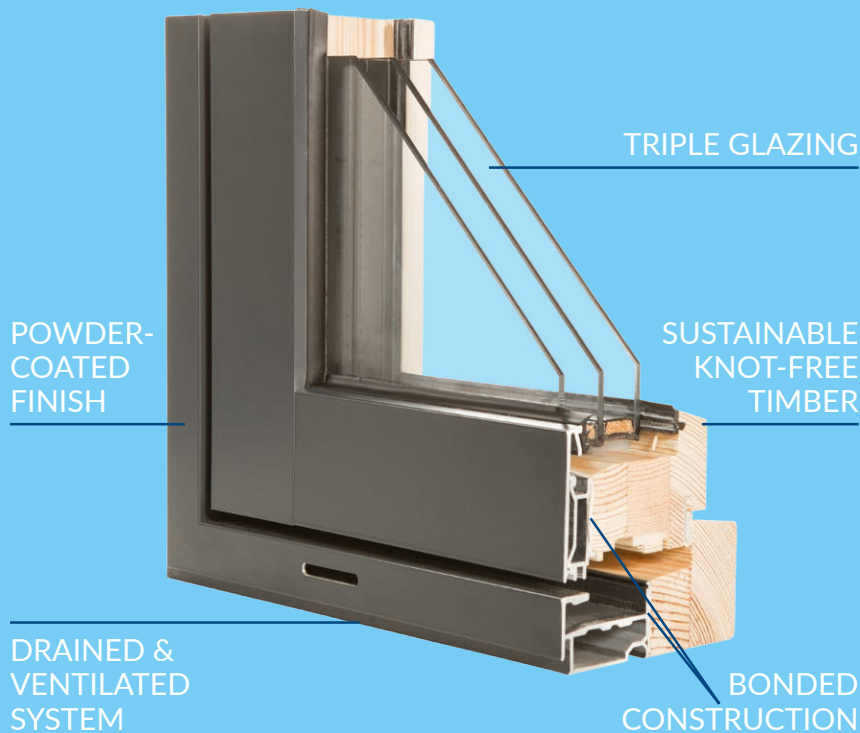


WESTCOAST SUPPLIED IN EXCESS OF 6,500M² SWEDISH HIGH PERFORMANCE COMPOSITE WINDOWS AND DOORS, ACROSS 62 FLOORS OF THE DEVELOPMENT



Images courtesy of Berkeley Group: www.berkeleygroup.co.uk

SWEDISH COMPOSITE WINDOWS & DOORS

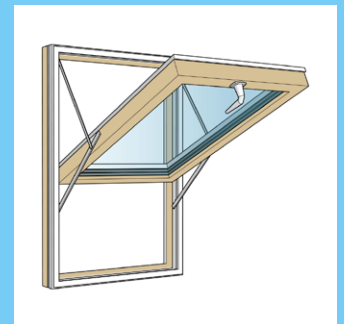


48MM TRIPLE GLAZING, AVAILABLE IN OUTWARD OPENING WINDOWS, TERRACE, PATIO DOORS AND SLIDING DOORS

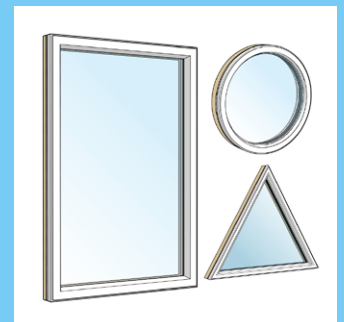
- Sustainably sourced
- Secured by Design certified
- Acoustic attenuation up to 46dB Rw
- Sub 1.0 W/m²K U-value
- Optional Oak timber internally



PRODUCTS USED (CLICK TO VIEW)



TOP HUNG REVERSIBLE WINDOW TSG180



FIXED LIGHT WINDOW FKG



SINGLE TERRACE / PATIO DOOR (OPEN OUT) FDG

OUR CLIENTS INCLUDE:

